

(GT4 Nylon)

**GT1,GT3
Simile APG.**

On a dark des-ert high-way cool wind in my hair warm smell of co-li-tas ris-ing up thru the air
Her mind is tif-fa-ny twist-ed she got the Mer-ce-des benz oh she got a lot of pret-ty pret-ty boys that she calls friends

up a-head in the dis-tance I saw a shim-mer-ing light my head grew heavy and my sight grew dimmer I had to stop for the night
How they dance in the court-yard sweet sum-mer sweat Some dance to re mem ber Some dance to for-get

GT4

0 3 3 3 4 3 3 4 2 3 3 | 0 7 3 3 3 2 2 2 0 | 0 2 2 2 1 2 2 3 3 3 3 3 | 3 3 3 3 2 2 0 2 1 6 6

There she stood in the door way I heard a mission bell And I was think ing to my self This could be heav en or this could be hel
So I called up the Cap-tain Please bring me my wine He said We haven't had that spir-it here since nine-teen six-ty nine

0 3 3 3 2 i i 2 3 3 | 0 5 5 2 3 2 i i 6 5 5 | 0 2 2 2 2 2 i i 2 i 2 3 | 0 3 3 2 3 6 3 2 2

Then she lit up a can-dle and she showed me the way There were voices down the cor-ri-dor I thought I heard them say
And still those voic-es are call-ing from far a way wake you up in the mid-dle of the night just to here them say

0 4 4 4 4 4 4 4 4 4 4 4 4 4 4 4 3 3 | 0 3 3 | 3 2 2 2 3 3 3 3 2 2 2 2 1 2 | 2 i i i i

Well-come to the Ho-tel cali-for-nia such a love-ly place such a love-ly face
(such a love-ly place)

(GT4)

3 4 4 4 4 4 4 4 4 4 5 4 4 | 3 3 | 0 2 3 | 3 2 2 2 2 3 3 2 2 2 2 2 4 | 4 3 3 3 3

plen-ty of room at the Ho-tel cali-for-nia any time of year you can find it here
(any time of year)
They livin' it up at the Ho-tel cali-for-nia what a nice surprise bring you alibis
(what a nice surprise)

12 12 12 12
10 10 10 10

9 9 9 7 7 7 5 5 5 5
10 10 10 8 8 8 7 7 7 7

2 2 2 2

Bm **Bm** **#F7/A** **#F** **A** **A** **E** **E**

7 7 7 5 6 5 7
2 2 2 2 3 3 3 3
0 3 3 3 4 3 4 2 3 3

0 3 3 3 3 3 2 2 3 5 6 6
0 3 2 2 2 3 2 2 2 3 3

0 2 3 3 2 1 1

Mir-rors on the ceil-ing the pink cham-pag neonic and she socid We are all just pris-on-ers here of our own de-vice

G **G** **D/#F** **D** **Em** **Em7** **#F7** **#F**

4 4 4 2 2 2 3
5 5 5 2 2 2 4

2 2 2 2 4 2 3 2
4 4 4 4 2 4 2 3 2

0 0 2 0 0 0 0 0
2 0 4 2 5 4 0 9

7 4 4 3 2 3
2 1 2 4

0 1 3 3 3 3 2 1 2 3 3
0 3 3 2 2 1 1

0 2 2 2 2 1 1 2 1 2 3 2 1
3 3 3 3 2 2 3

And in the mas-ter's cham-bers they gath-ered for the feast They stab with their stee-ly knives it but they just can't kill the beast

Bm **Bm** **#F7** **#F** **A** **A** **E** **E**

7 7 7 5 6 5 7
2 2 2 2 3 3 3 3

0 5 2 2 2 2 2 2 3 3 3 3
3 3 3 2 1 2 2 1 6 6

Lost thing I re-mem-ber I was run-ning for the door I had to find the pas-sage back to the place I was be-fore

G **G** **D/#F** **D** **Em** **Em7** **#F7** **#F**

4 4 4 2 2 2 3
5 5 5 2 2 2 4

2 2 2 2 4 2 3 2
4 4 4 4 2 4 2 3 2

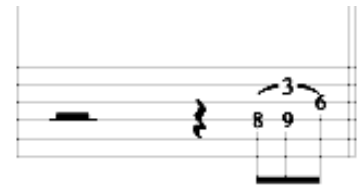
0 0 2 0 0 0 0 0 0
2 0 4 2 5 4 0 9

7 4 4 3 2 3
2 1 2 4

0 1 3 3 2 1 1 2 3 3 1 6
6 1 6 6 6 1 1

0 2 2 2 2 2 1 1 2 1 2 2
0 3 3 3 3 7 2 3 2 3 3

Re-lax said the night man we are pro-gram-med to re-ciee You can check out any time you like but you can nev-er leave



Chord diagrams: Bm (7fr), Bm (x 2fr), #F7/#A (7fr), #F (2fr), A (7fr), A (2fr), E (7fr), E.

Staff 1: 9 9 9 9 9 7 6 9 7 6 | 7 5 3 2 2 9 10 | 12 12 12 12 12 10 9 10 9 | 9 9 9 9 9 11 11 11 2

Staff 2: 0 0 0 0 | 0 0 0 0 | 0 0 0 0 | 0 0 0 0

Chord diagrams: G (7fr), G (3fr), D#F (7fr), D (5fr), Em (7fr), Em7, #F7 (7fr), #F7 (2fr).

Staff 1: 3 0 2 2 5 4 2 5 4 2 2 5 4 2 4 | 2 2 4 4 4 4 | 0 0 0 0 0 0 0 0 0 0 | 2 2 2 2 3 4 4 2 9 9 11 9 8 9 11 12 9 11

Staff 2: 0 0 0 0 | 0 0 0 0 | 0 0 0 0 | 0 0 0 0

吉他谱 <http://www.jitapu.com>

(Guitar4)

Chord diagrams: Bm (7fr), Bm (x 2fr), #F7/#A (7fr), #F7 (2fr), A (7fr), A (2fr).

Staff 1: 11 12 11 9 11 11 12 | 9 11 11 12 11 9 9 11 9 7 7 9 7 6 9 | 8 6 9 | 12 14 12 11 14 14 | 12 12 | 7 7 7 7 5 5 5 7 7 6 3 2

Staff 2: 0 0 0 0 | 0 0 0 0 | 0 0 0 0 | 0 0 0 0